

# HOUSING IS HEALTHCARE

## Bridging Gaps in Transplant Patient Care

### Research key highlights

Access to healthcare is significantly inequitable in British Columbia, especially for rural residents requiring solid organ transplants. These patients must relocate to Vancouver, facing overwhelming challenges such as housing scarcity, financial strain, & systemic barriers. Geographic location emerges as a critical social determinant of health.

### Financial Burden

**\$18,535.70**

IS THE AVERAGE TOTAL OUT OF POCKET COST FOR TRANSPLANT PATIENTS



### Accommodation average cost:

**\$10,235**

with additional cost for transportation & caregiving

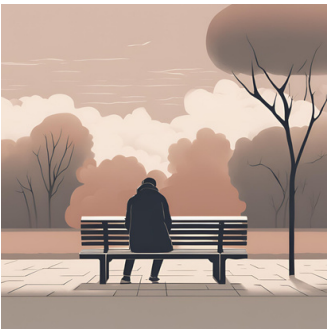


### Stress & Housing Challenges



### Unaffordable housing

- Vancouver's unaffordable housing market exacerbates stress for patients & caregivers.
- Middle-income patients frequently fall through the gaps in support.
- Seasonal cost variations & limited availability of subsidized housing add further challenges



- Supports are fragmented & difficult to access, especially for rural patients.
- Caregivers face compounded financial & logistical burdens, balancing caregiving & income generation.



### Systemic issues

## Recommendations

1



Establish comprehensive funding for transportation, temporary housing, & daily expenses for transplant patients

2



Recognize need for available, targeted, affordable & subsidized accommodation for patients as part of an integrated provincial strategy

3



Create dedicated, multi-purpose patient housing akin to Ronald McDonald House to meet long-term needs

4



Embed system navigators to streamline processes & improve patient experiences

5



Ensure continuous monitoring & improvement through quality frameworks

## Conclusion

The absence of systematic housing & financial support for rural transplant patients jeopardizes equitable healthcare access. By addressing these disparities, British Columbia can honor the principles of the Canada Health Act & ensure better health outcomes for all residents



Dr. Jude Kornelsen, Project Lead  
Jacqueline Podewils, Founder



jude.kornelsen@familymed.ubc.ca  
jp@housingishealthcare.ca